



河北三丰过滤器有限公司
HEBEI SINFT FILTER CO., LTD

SINFTFILTER
HEBEI SINFT FILTER CO., LTD




www.sinffilter.com
iris@sinffilter.com


SINFTFILTER
HEBEI SINFT FILTER CO., LTD

FILTER TUBES STRAINERS & BASKETS

 7th Building, Ruicheng City Plaza, Jinshan Street, Shijiazhuang,
Hebei Province, China

 +86 153 0311 2602

 iris@sinffilter.com

 www.sinffilter.com





河北 佛特过滤器有限公司
HEBEI SINFT FILTER CO., LTD

COMPANY PROFILE

HISTORY & LOCATION

Established in 2007, SINFT FILTER has become a professional and experienced manufacturer of high-quality Filter Tubes, Strainers & Baskets with 16 years of experience accumulation and precipitation. We are located in the capital city of Hebei Province - Shijiazhuang, and covering 26,658m2, which is very near to Beijing and Tianjin. Therefore, we have the advantages for transportation via air, ocean, railway, DHL, UPS, FedEx, etc.

VISION & MISSION

We commit to providing our customers with high-quality, high-efficiency products and solutions to meet their requirements on time and without defects. Everything we do starts with a specific need which represents our true mission. It drives us to improve and provide better products and service for our customers continuously.

PRODUCTION

Whether you need woven wire cloth, perforated metal, etching mesh, sintered wire mesh, sintered felt, welded wire mesh, wedge wire mesh or expanded metal to process Filter Tubes, Strainers & Baskets, SINFT FILTER has the expertise and equipment to deliver what you need. Our team is staffed with experienced professionals who are committed to meeting your needs.

Our capabilities are extensive, including slitting, cutting, bending, pleating, welding, stamping, injection molding, calendaring, CNC lathe, ultrasonic cleaning, and laser marking. This allows us to produce these wire mesh assemblies with precision and efficiency. From cutting to stamping, machining to welding, assembling to cleaning, we have the knowledge and experience to produce Filter Tubes, Strainers & Baskets that meet your exact specifications.

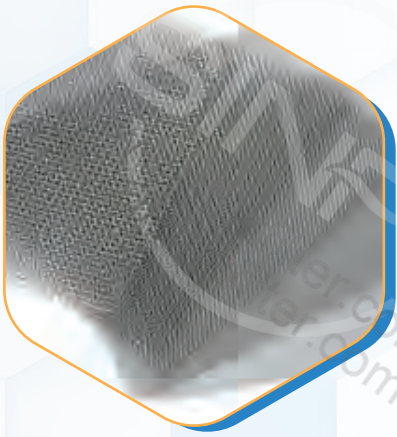
CERTIFICATION

ISO 9001:2015, CE, etc.



MATERIALS FOR CHOICE

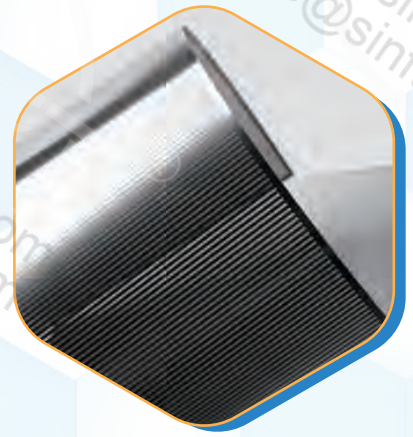
Materials can be chosen from the following types according to your specification, requirements, application, etc.



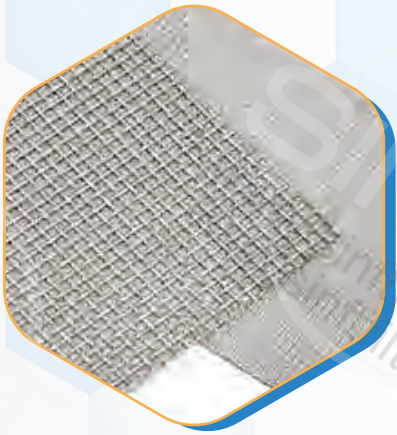
Woven Wire Cloth



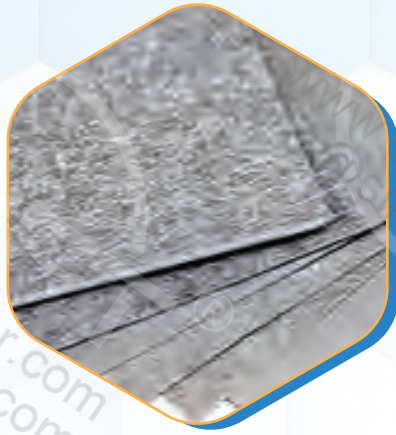
Perforated Metal



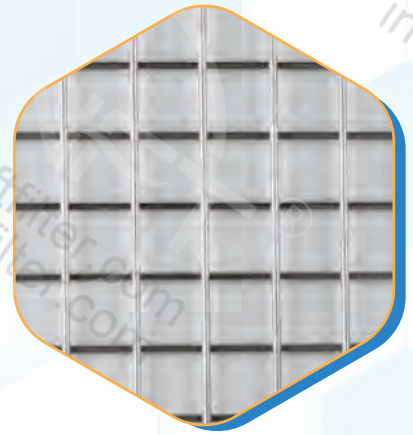
Chemical Photo Etching



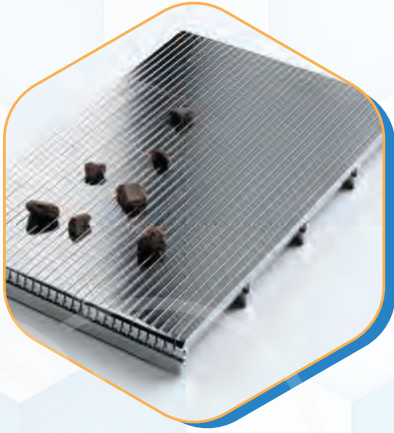
Sintered Wire Mesh



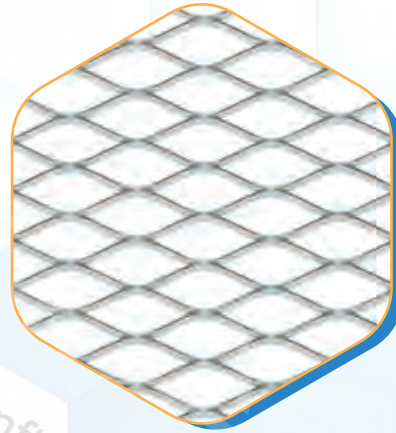
Sintered Felt



Welded Wire Mesh



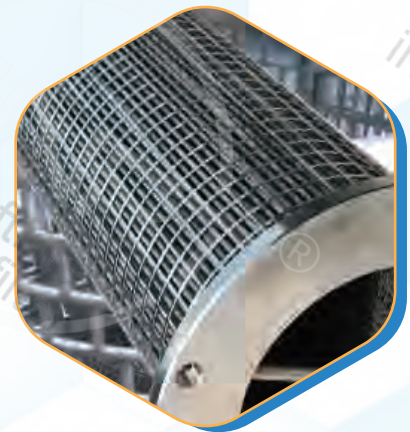
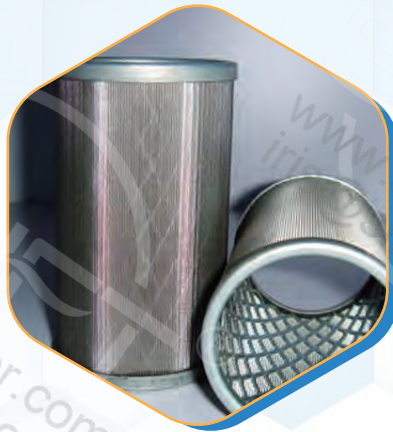
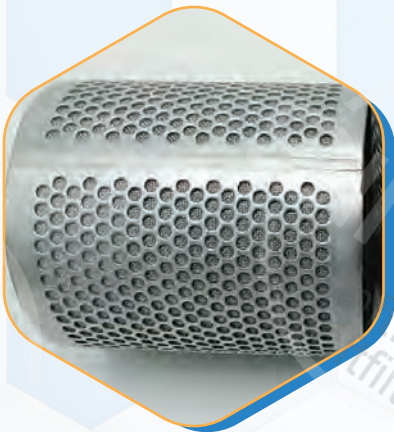
Wedge Wire Panel



Expanded Metal

Multi-layers

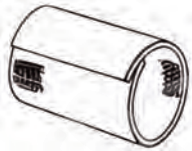
Multi-layers can be the combination of the above materials, such as woven wire cloth + perforated metal, woven wire cloth + expanded metal, woven wire cloth + sintered felt + woven wire cloth + perforated metal, etc.



WELDING TYPES AVAILABLE

- Resistance spot welding
- Plasma welding
- Seamless welding
- Spiral welding
- Arc welding
- Argon arc welding

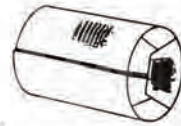
TYPICAL CONSTRUCTION DETAILS



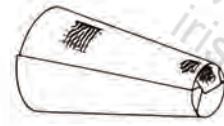
Lap Seam



Butt Seam



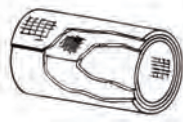
Envelope Fold



Truncated Cone



Gasketing
Rubber & Synthetic



Multi-Layer Construction
Sintered or Welded



Cone



Machined or
Stamped Details

ADHESIVE FOR CHOICE

- Epoxy Resin Adhesive I (Temperature resistance to 300 °C)
- Epoxy Resin Adhesive II (Temperature resistance to 150 °C)
- Polyurethane Adhesive (Temperature resistance to 150 °C)

END TYPES



ROUGH END



FLANGE END



FRAMED END



THREADED END

Various configurations and methods of construction and fabrication are available to suit customer needs.

OUR ADVANTAGES ON PRODUCTION

- We know all the materials used for production.
- We know how to fabricate wire cloth, filter tubes, strainers and baskets.
- We know how to design the right products to suit your needs.
- We can provide drawings for approval.
- We can offer different welding types and seams.
- We can offer filter tubes, strainers and baskets with rim, ring, handle, flange, thread, cap, O-ring, washer or gasket, etc.
- Our materials are available in any mesh or micron opening size.

QUALITY CONTROL

We control and inspect our parts from the following points:

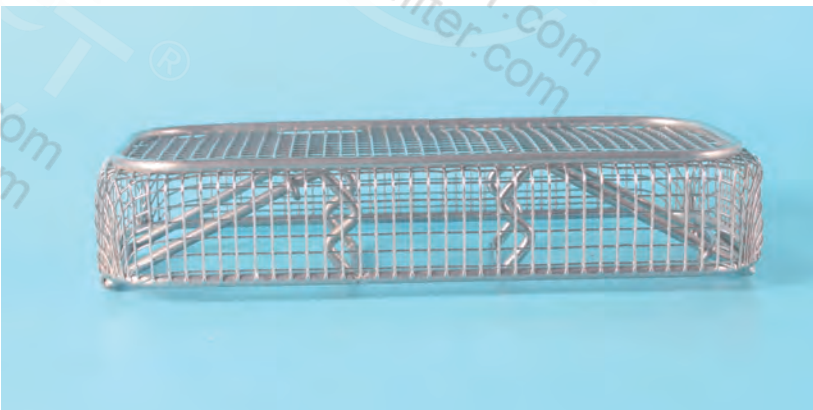
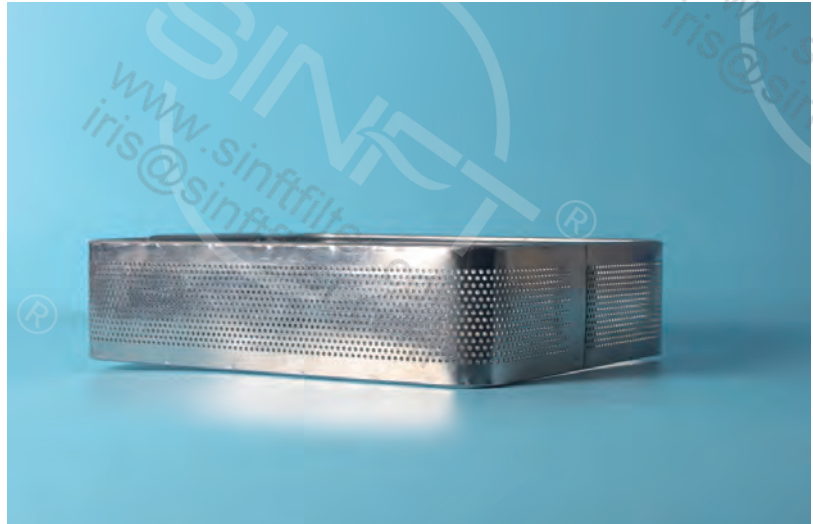
- Is the appearance without defects?
- Are all dimensions within tolerance?
- Are the burrs free?
- Do the parts confirm to the drawing?
- Do the seams line up?
- Are the seams straight?
- Is the wire cloth taut or is it loose and wrinkled?

Our products meet the standard of ISO 9001, the international standards used to meet requirements for quality management systems. These standards ensure we consistently provide products and services that meet both regulatory and customer requirements.

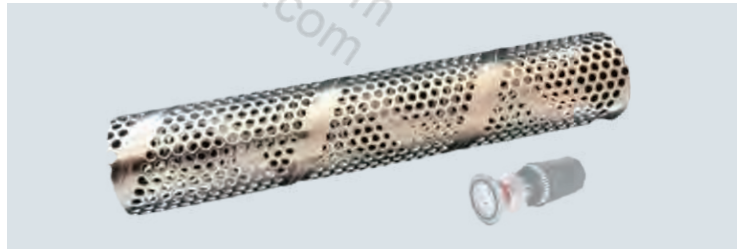
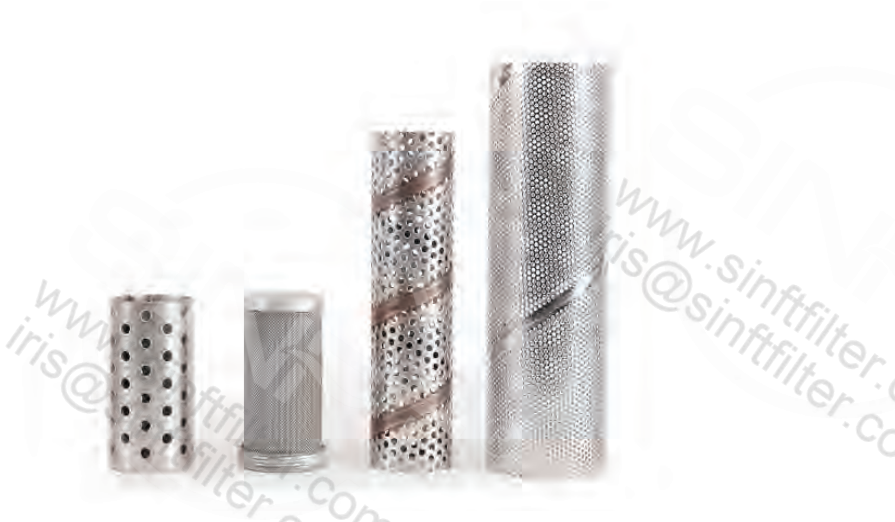


FILTER TUBES, STRAINERS & BASKETS FOR VARIOUS APPLICATIONS

For Cleaning



Support Tube For Filter Element



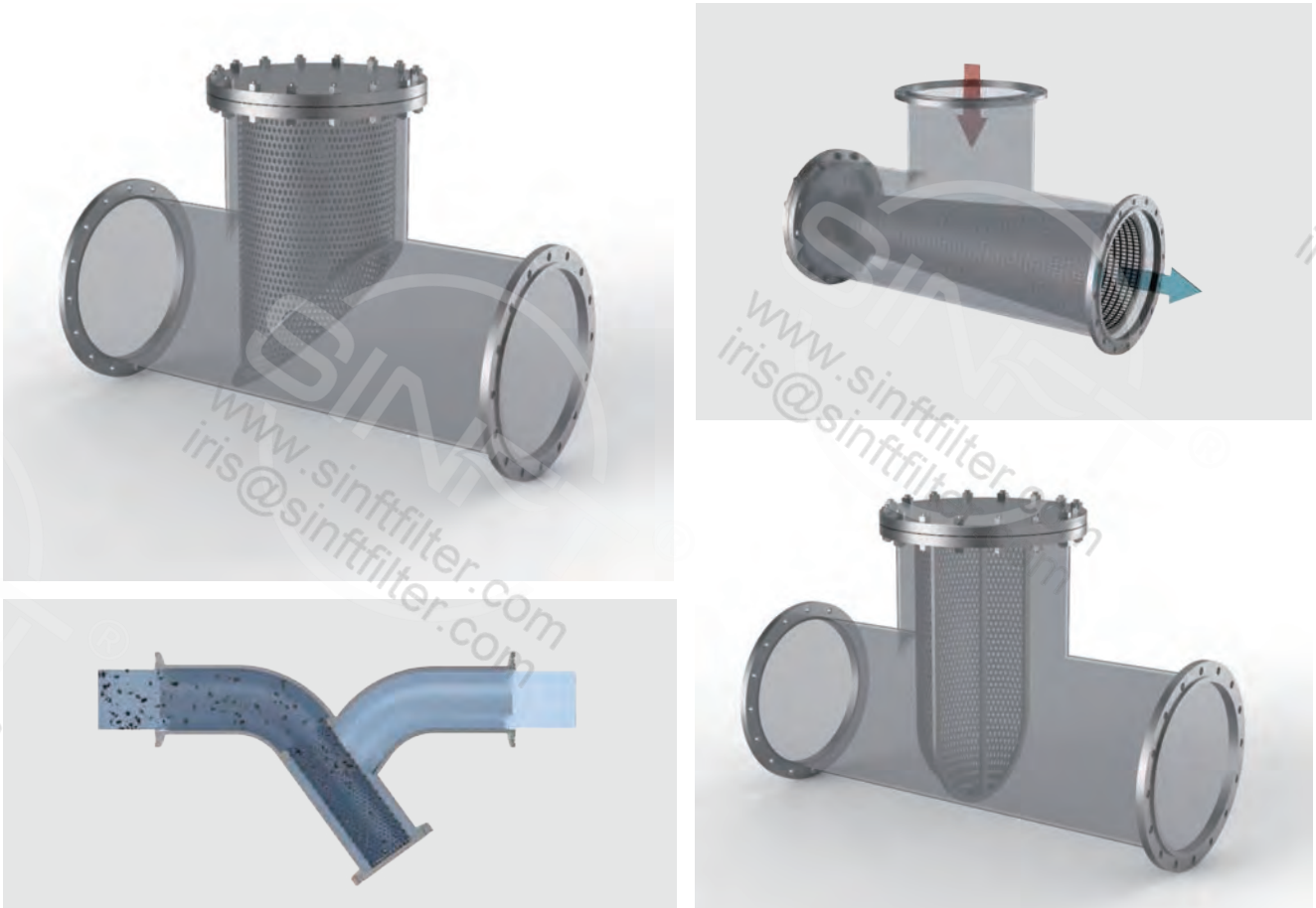
For Supporting



For Filter Housing



For Pipe Line



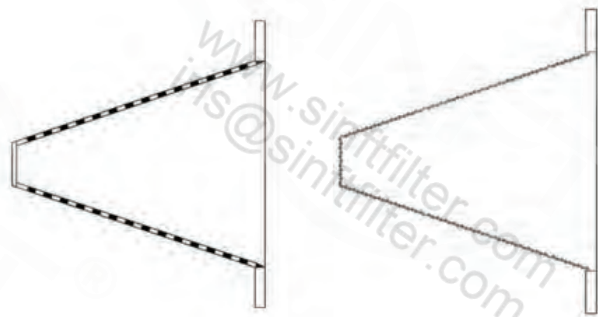
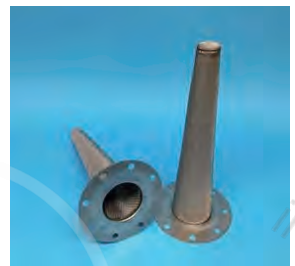
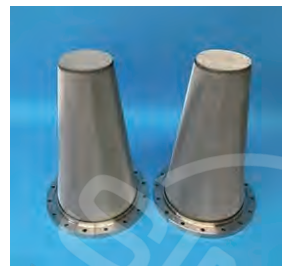
For Home Brewing



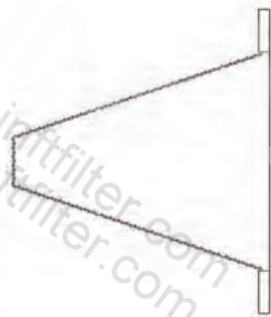
Containers



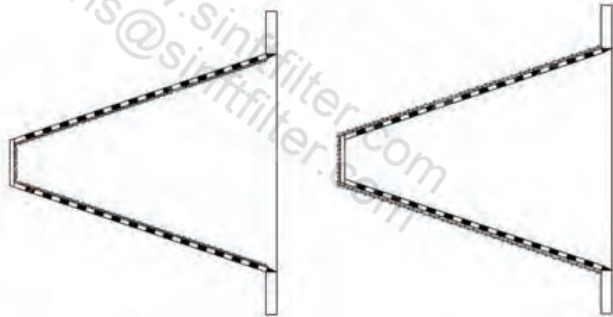
Temporary Strainers / Conical Strainers



STYLE "A"
Perforated



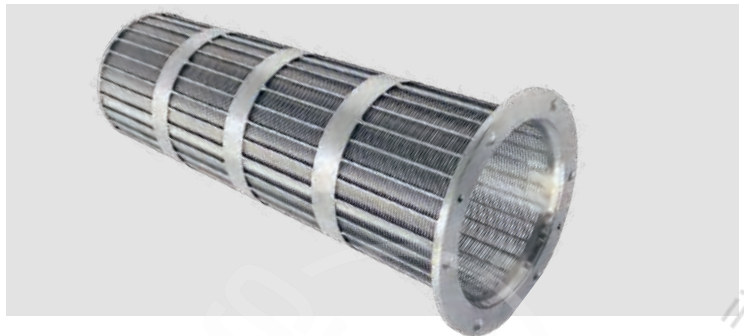
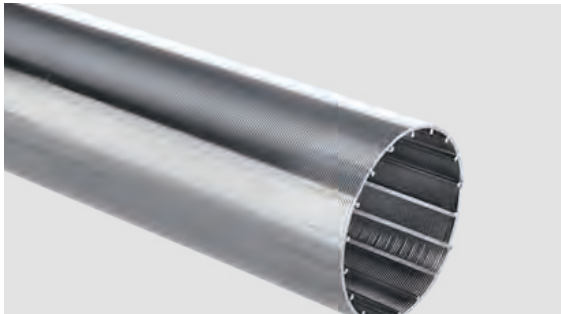
STYLE "B"
Wire Cloth



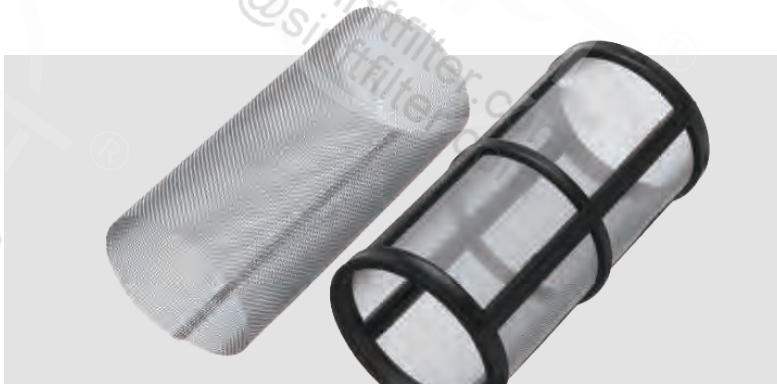
STYLE "C"
Wire Cloth Inside
Perforated Outside

STYLE "D"
Wire Cloth Outside
Perforated Inside

Wedge Wire Screen



Injection Molding Type

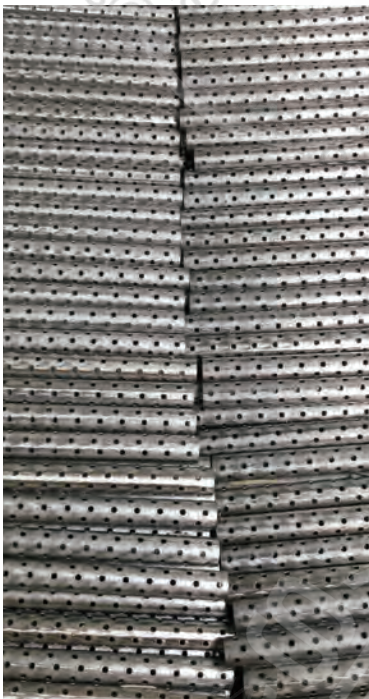
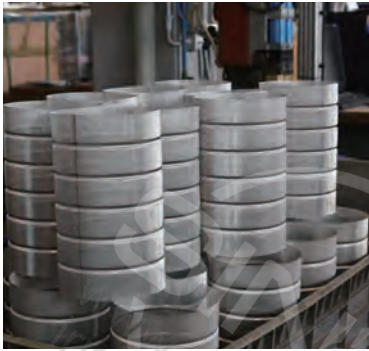


Other Customized Products



Our Filter Tubes, Strainers & Baskets are broadly applied in the field of electric power industry, petrochemical industry, food & beverage, pharmaceutical, agriculture, laboratory, chemical, water treatment, wastewater treatment, aerospace industry, etc.

STORAGE & PACKAGING

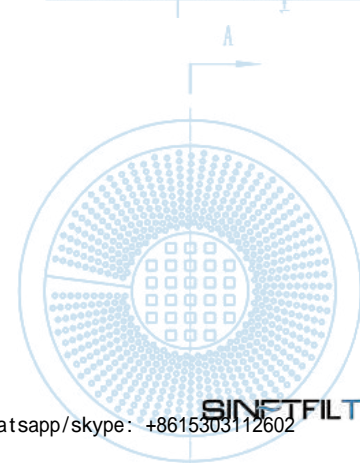
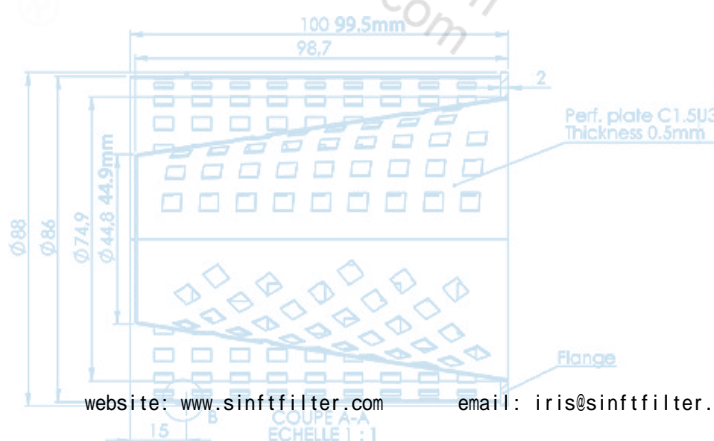
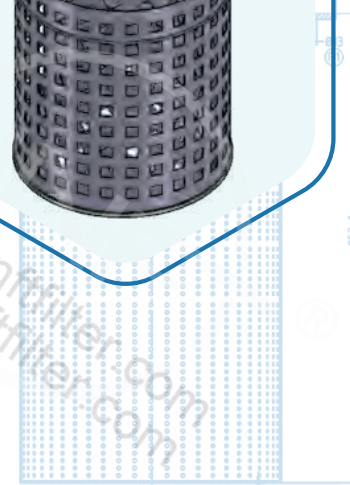
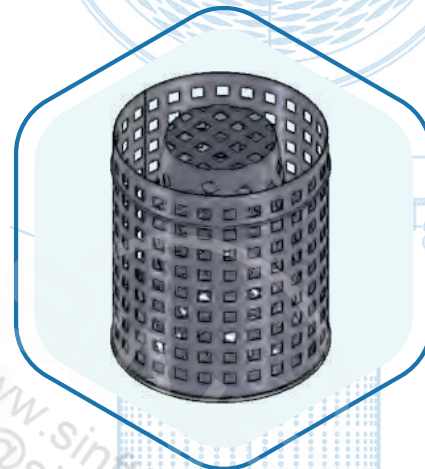
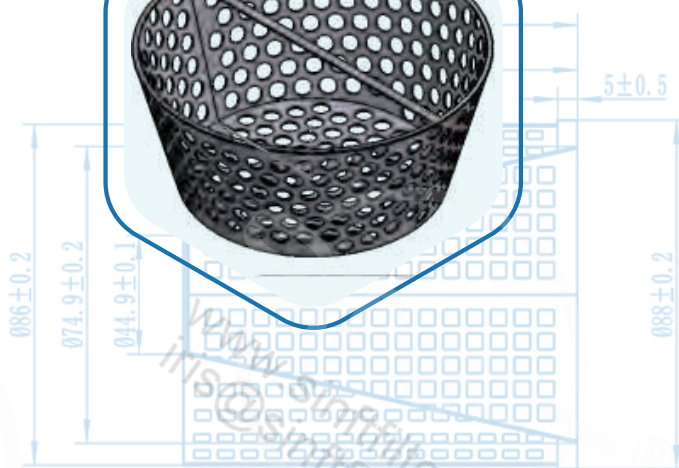


We provide various packaging methods, and will customize the best way according to the cargoes to prevent damage during transportation.

HOW TO INQUIRY / ORDER?

Here's the information we need from you:

- Materials of Construction
- Rough Dimensional Sketch or drawing of the part or assembly
- Construction Details: type of seam, type of welding, support layers, etc
- Mesh Specification: mesh count, wire diameter, opening size or the particle size to be retained
- Quantity

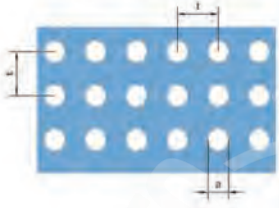
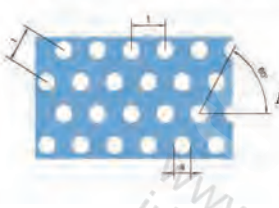
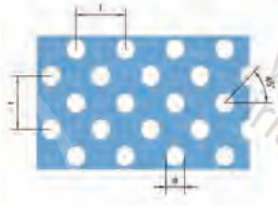
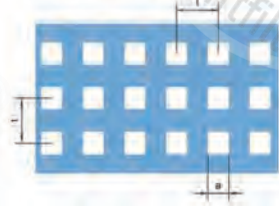
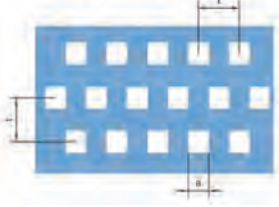
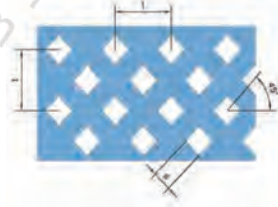
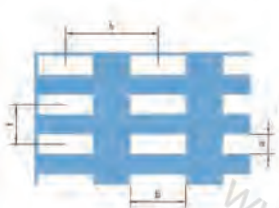
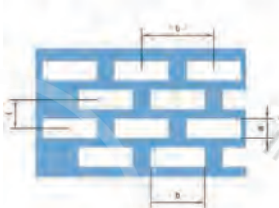
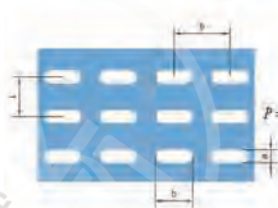
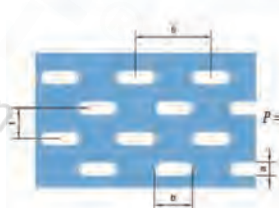
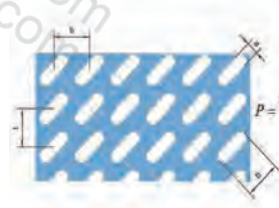
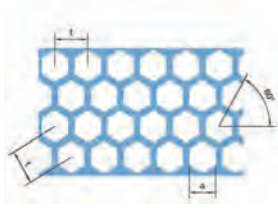


Attachment I

WIRE CLOTH MICRON RETENTION

Mesh Count	Wire Diameter		Width of Opening		Micron Size	Open Area
	inches	mm	inches	mm		%
2	0.063	1.6	0.437	11.10	11100	76.4
3	0.054	1.37	0.279	7.09	7090	70.1
4	0.047	1.19	0.203	5.16	5160	65.9
5	0.041	1.04	0.159	4.04	4040	63.2
6	0.035	0.89	0.132	3.35	3350	62.7
8	0.028	0.71	0.097	2.46	2460	60.2
10	0.025	0.64	0.075	1.91	1910	56.3
12	0.023	0.584	0.060	1.52	1520	51.8
14	0.020	0.508	0.051	1.30	1300	51
16	0.018	0.457	0.0445	1.13	1130	50.7
18	0.017	0.432	0.0386	0.98	980	48.3
20	0.016	0.406	0.0340	0.86	860	46.2
24	0.014	0.356	0.0277	0.70	700	44.2
30	0.013	0.330	0.0203	0.52	520	37.1
35	0.011	0.279	0.0176	0.45	450	36.9
40	0.010	0.254	0.0150	0.38	380	36
50	0.009	0.229	0.0110	0.28	280	30.3
60	0.0075	0.191	0.0092	0.23	230	30.5
70	0.0065	0.165	0.0078	0.20	200	29.8
80	0.0055	0.140	0.0070	0.18	180	31.4
90	0.0050	0.127	0.0061	0.16	160	30.1
100	0.0045	0.114	0.0055	0.13	140	30.3
110	0.0040	0.1016	0.0051	0.1295	129.5	31.4
120	0.0037	0.0940	0.0046	0.1170	117	30.5
130	0.0034	0.0860	0.0043	0.1090	109	31.1
140	0.0029	0.0740	0.0042	0.1070	107	34.9
150	0.0026	0.0660	0.0041	0.1040	104	37.4
160	0.0025	0.0640	0.0038	0.0965	96.5	37.6
170	0.0024	0.0610	0.0035	0.0889	88.9	35.1
180	0.0023	0.0584	0.0033	0.0838	83.8	34.7
200	0.0021	0.0534	0.0029	0.0737	73.7	33.6
250	0.0016	0.0406	0.0024	0.061	61	36
270	0.0016	0.0406	0.0021	0.0533	53.3	32.2
325	0.0014	0.0356	0.0017	0.0432	43.2	30.5
400	0.0010	0.0254	0.0015	0.037	37	36
500	0.0010	0.0254	0.0010	0.0254	25.4	25
635	0.0008	0.0203	0.0008	0.0203	20.3	25

OPEN AREA CALCULATOR FOR PERFORATED METAL

<p>Round – straight pattern</p>  <p>$P = 0.785 \times \frac{a^2}{l^2} \times 100$</p>	<p>Round – 60° staggered pattern</p>  <p>$P = 0.91 \times \frac{a^2}{l^2} \times 100$</p>	<p>Round – 45° staggered pattern</p>  <p>$P = 1.57 \times \frac{a^2}{l^2} \times 100$</p>
<p>Square – straight pattern</p>  <p>$P = \frac{a^2}{l^2} \times 100$</p>	<p>Square – staggered pattern</p>  <p>$P = \frac{a^2}{l^2} \times 100$</p>	<p>Square – 45° staggered pattern</p>  <p>$P = 2 \times \frac{a^2}{l^2} \times 100$</p>
<p>Square end slot – straight pattern</p>  <p>$P = \frac{a \times b}{l \times t} \times 100$</p>	<p>Square end slot – staggered pattern</p>  <p>$P = 2 \times \frac{a \times b}{l \times t} \times 100$</p>	<p>Round end slot – straight pattern</p>  <p>$P = \frac{a \times b - 0.215 \times a^2}{l \times t} \times 100$</p>
<p>Round end slot – staggered pattern</p>  <p>$P = 2 \times \frac{a \times b - 0.215 \times a^2}{l \times t} \times 100$</p>	<p>Round end slot – 45° staggered pattern</p>  <p>$P = \frac{a \times b - 0.215 \times a^2}{l \times t} \times 100$</p>	<p>Hexagonal hole</p>  <p>$P = \frac{a^2}{l^2} \times 100$</p>