

Replacement Hilco Filter Cartridge

Long Life and Super Quality



The reliability and efficiency of any filtration system is chiefly dependent on the quality of the cartridges used in it. SINFT has a full line of filter cartridges for virtually every application depending on size, filtration efficiencies and dirt-holding capacity.



HEBEI SINFT FILTER CO., LTD.

Add. : 7th Building, Ruicheng City Plaza, Jinshan Street,
Shijiazhuang, Hebei Province, China

Tel: +8617730561616

Email: filterelement@sinfilter.com

Web: www.sinfilter.com

Brief Introduction of Enterprise



History

SINFT was established in 2007, covering 26,658m², located in Shijiazhuang City, Hebei Province. We specialized in the design and manufacture filter elements including replacement filter element and customized filter element. We hold ISO 9001:2015 and CE Certification.

SINFT has been serving 3 most famous brands in the filtration industry. The annual sales of \$11 million. Main markets are Europe, America, Middle East, East Asia, Australia and Africa.



VISION & MISSION

SINFT vision: High-quality, future-proof products and solutions with customer service for any need at any time. Everything we do starts with a specific need which represents our true mission. It drives us to continuously improve and build trust with our customers.



PRODUCTION

SINFT produces high quality filtration products compatible with major brands in the world market with much competitive prices. We use advanced, professional, automated and precise equipment to escort the orders, and our professional quality department from the operator to the precise control system of the machine which all ensure the safety and reliability of the quality.



CERTIFICATION

SINFT certifications: ISO 9001:2015, CE, EPR and others.



Replacement Hilco Filter Cartridge

01

SINFT Advantage For Replacement Filter Cartridge

02

SINFT Filter Cartridge Quality Testing

04

Replacement Filter Cartridge Production

03

Replacement Hilco Filter Cartridge Series

- PH filter cartridge
- PL filter cartridge
- PD Hilsorb Cartridges
- HP Synthetic High Pressure Cartridges
- O-ring Sealed 718/736 Cartridges
- Selexsorb GT Filter Cartridges and Systems
- Gas Coalescer / Separator Cartridges
- Demister Element

SINFT Advantage for Replacement Filter Cartridge



1. Raw Material inventory:

We maintain a stock of 20 various types of element media in large rolls, which can be slit according to specific customer requirements. Additionally, we have multiple sizes of steel mesh available for strainers.

2. Center Tubes:

We have center tube manufacturing machines capable of producing louvered tubes from 1-5/8" diameter to 15" in diameter ranging in length from 4" to over 50" long.

3. Sizing to meet requirements:

Our current cartridge sizes range from 2" in diameter x 4" long to 20" in diameter x 50" long and all sizes in between.

Custom fabricated pleaters are capable of producing elements with pleat heights from 5/32" to 2-5/32" and widths to 51 -3/32" wide.

4. Assembly capabilities:

Utilizing a range of semi-automated assembly machines and presses, we have the capacity to manufacture over 25,000 cartridges per month.

5. On Site Testing Facility:

SINFT can analyze filter element samples and provide the most cost effective solutions.

6. Stock and Delivery:

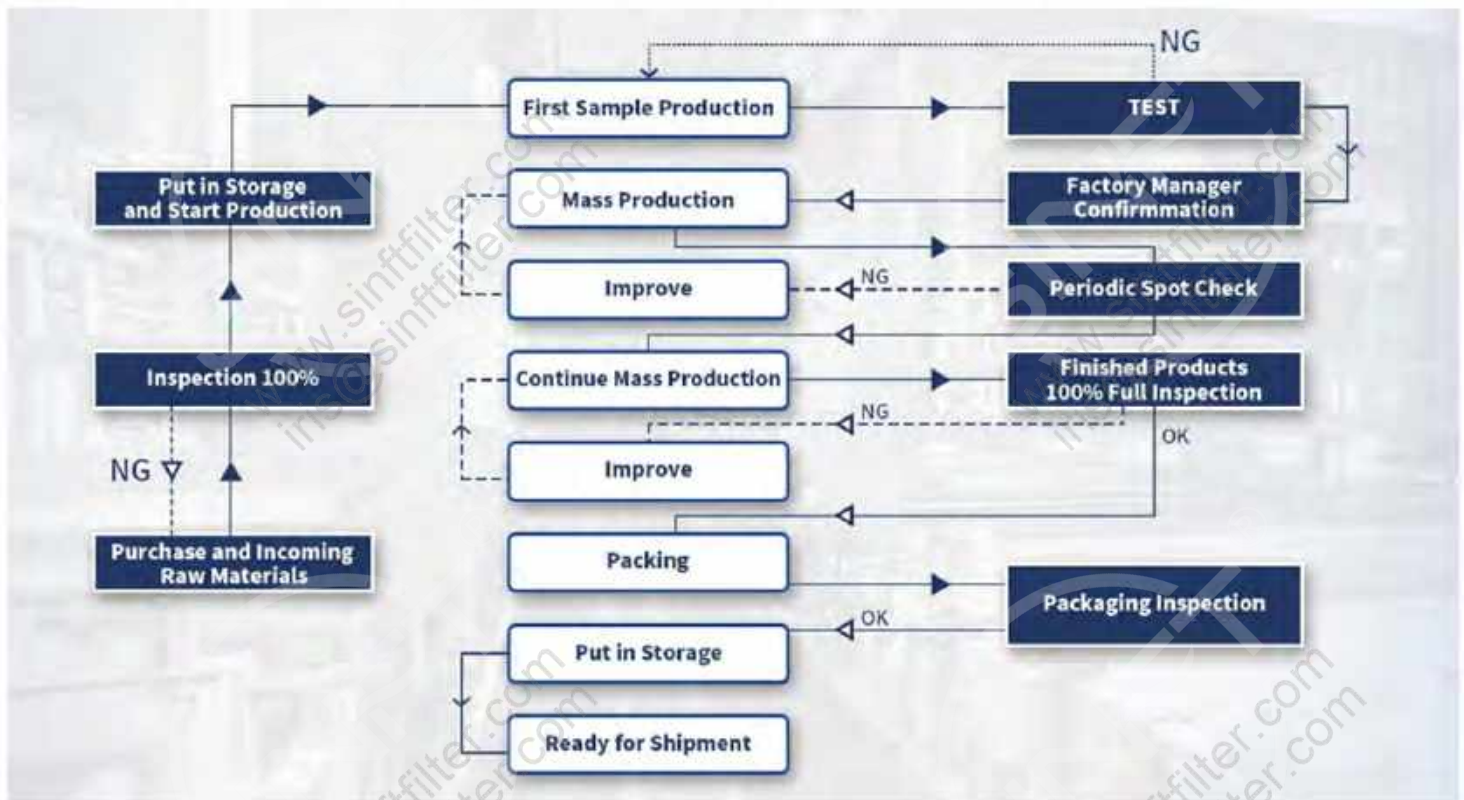
The majority of our cartridges are maintained in stock, allowing us to promptly fulfill our customers' requirements with same-day shipping. In addition, our exceptional engineering team and manufacturing prowess enable us to produce customized cartridges in as little as 2 weeks.



Sinft Filter Cartridge Quality Testing

Process Quality Control

Quality is the lifeblood of a business, so we attach great importance to it. Quality testing runs through every stage of the order. Here is an illustration of quality testing at each stage:



SINFT Profession Filter Cartridge Testing Room:

We have the professional testing equipment: Constant temperature and humidity test chamber, Precision salt spray test machine, Air permeability tester, Bubble test bench, Tensile testing machine, Fully automatic bursting strength tester and others.



Replacement Hilco Filter Cartridge Series

PH filter cartridge

4. Filter cartridge details



1. Introduction

These durable cartridges stand up to continued use without softening and deterioration as a result of exposure to water. The key is an advanced synthetic media that provides maximum filtration with minimum pressure drop.

2. Features

- Microglass filter media is sandwiched between two protective layers of nylon media then supported with an epoxy-coated steel screen.
- Support screens provide a rigid pleat structure to withstand high cyclic and pulse flow fatigue.
- Synthetic media enables the cartridge to be used in a wide range of applications, including those which could deteriorate a standard cellulose paper cartridge (i.e., water exposure).

3. Applications

Engine and turbine lube, compressor lube and seal oil, cooling water, process water, and chemicals.

| Series | Part number |
|-------------|---|
| PH310-**-C | PH310-12-C,PH310-01-C,PH310-03-C,PH310-05-C,PH310-10-C,PH310-12-CV,PH310-20-C,PH310-40-C,PH310-16-C,PH310-11-C,PH310-16-CV |
| | Size:L*OD*ID : 9 11/16"*2 3/4"*1 1/16" |
| PH312-**-CG | PH312-01-CG,PH312-03-CG,PH312-05-CG,PH312-10-CG,PH312-11-CG,PH312-12-CG,PH312-16-CG,PH312-20-CG,PH312-40-CG |
| | Size:L*OD*ID 12"*3"*1 11/16" |
| PH414-**-CG | PH414-01-CG,PH414-01-CGV,PH414-03-CG ,PH414-05-CG,PH414-05-CGV,PH414-10-CG,PH414-11-CG,PH414-12-CG,PH414-14-CG,PH414- 20-CG,PH414-40-CG,PH414-16-CG |
| | Size:L*OD*ID: 14"*3 15/16"*2 7/32" |
| PH511-**-C | PH511-12-C,PH511-11-C ,PH511-01-C ,PH511-03-C ,PH511-05-C,PH511-10-C,PH511-20-C,PH511-20-C,PH511-20-C,PH511-20-C,PH511-20-C,PH511-20-C,PH511-20-C,PH511-20-C,PH511-20-C,PH511-20-C,PH511-20-C,PH511-20-C,PH511-20-C,PH511-20-C,PH511-20-C,PH511-40-C,PH511-16-C |
| | Size:L*OD*ID:11" X 4 5/16" X 1 3/4" |
| PH511-**-CG | PH511-01-CG,PH511-01-CGV,PH511-03-CG,PH511-03-CGV,PH511-05-CG,PH511-05-CGS,PH511-05- -CGV,PH511-10-CG,PH511-10-CGV,PH511-11-CG,PH511-12-CG,PH511-12-CGV,PH511-20-CG,PH511-20-CGV,PH511-40-CG,PH511-40-CGV |
| | Size:L*OD*ID:11 1/2"X 4 5/16" X 1 11/16" |
| PH518-**-C | PH518-01-C,PH518-01-CVSS,PH518-03-C,PH518-05-C,PH518-05-CX,PH518-10-C,PH518-11-C,PH518-12-C ,PH518-12-CF,PH518-14-C,PH518-16-C,PH518-20-C,PH518-40-C |
| | Size:L*OD*ID:18 1/16"x 4 11/16"x 2 9/16" |
| PH718-**-CN | PH718-12-CN,PH718-11-CN,PH718-01-CN,PH718- -03-CN,PH718-05-CN,PH718-10-CN,PH718-14-CN,PH718-16-CN,PH718- 20-CN,PH718- -40-CN |
| | Size:L*OD*ID:18"X 6 1/4"x 2 9/16" |
| PH720-**-CG | PH720-01-CG,PH720-03-CG,PH720-05-CG,PH720-10-CG,PH720-11-CG,PH720-12-CG,PH720-12-CGV,PH720-16-CG,PH720- -20-CG,PH720-40-CG,PH720-01-CGN |
| | Size:L*OD*ID:19 5/16"X 6 1/4"X 4 1/8" |
| PH739-**-CG | PH739-01-CG,PH739- -03-CG,PH739- -05- -CG,PH739-10-CG,PH739- -11-CG,PH739-12-CG,PH739- -20-CG,PH739- 40-CG,PH739-01-CGV,PH739-03-CGV,PH739- -05- -CGV,PH739-10-CGV,PH739-12-CGV,PH739-16-CC,PH739-14-CG,PH739-16-CGV,PH739- -01-CGEPDM |
| | Size:L*OD*ID:38 5/8" x 6 1/4" x 4 1/8" |

PL filter cartridge



1. Introduction

The filter cartridges provide reliable, long-life contamination control. These efficient filter cartridges feature three filtration layers: outer cellulose-media layer for coarse filtration, an intermediate glass-media for microfiltration, and an inner cellulose-media layer for added support. Single-layer pleated paper cartridges are economical for use in applications requiring general filtration. Disposable cartridges feature molded urethane ends on various sizes. Plated metal end caps are also available with controlled radius pleats to maximize useable filtration area.

3. Features and Benefits

- Designed to withstand temperatures up to 250° F
- Controlled-radius pleats maximize effective filtration area and dirt-holding capacity
- Designed to withstand pressures up to 100 PSI
- Composed of specially formulated filter media to provide the most effective combination of fluid particle separation, fluid compatibility, and structural properties



2. Applications

Refrigeration compressors (lube and coolant), gas turbines, centrifugal lubricated couplings, high-pressure fluid filtration, and test stands.

4. Filter cartridge details

| Series | Part number |
|-------------|--|
| PL310-**-C | PL310-01-C, PL310-03- -C, PL310-03-CV, PL310- -03- BC, PL310-05-C, PL310-05-CV, PL310-05-SC, PL310-05- BC, PL310-10-C, PL310-10-CV, PL310-10-BC ,PL310-12-C, PL310-12-CV, PL310-12- BC |
| | Size: L*OD*ID: 9 11/16" X 2 3/4" X 1 1/16" |
| PL511-**-C | PL511-12-C, PL511-03-C, PL511-05-C, PL511-10-C, PL511-20-C, PL511-16-C |
| | Size: L*OD*ID: 11" X 4 5/16" X 1 3/4" |
| PL511-**-CG | PL511-03-CG, PL511-03-NCG, PL511-05-00, PL511-10-0G, PL511-10-NCC, PL511-12-CG |
| | Size: L*OD*ID: 11 1/2" X 4 5/16" X 1 11/16" |
| PL518-**-C | PL518-12-C, PL518-03-C ,PL518-05-C ,PL518-05-CV, PL518-10-C |
| | Size: L*OD*ID: 18" X 4 11/16" X 2 9/16" |
| PL718-**-CN | PL718-12-CN, PL718-02-CN, PL718-03-CN, PL718-05-CN, PL718-10-CN, PL718-20-CN, PL718-16-CN |
| | Size: L*OD*ID: 18" X 6 1/4" X 2 9/16" |

PD Hilsorb Cartridges



1. Introduction

Hilsorb Dryer Cartridges quickly and effectively remove solid and water contaminants from hydraulic, lube and insulating oils. The PD cartridge is made with a patented four-ply construction and is available in two efficiency ratings.

PD Series Pleated Dryer

The Hilco" Hilsorb" Super-Absorbent Dryer Cartridge combines high efficiency particulate filtration with high-capacity water absorption in a single pleated cartridge. The Hilsorb" cartridge excels in applications requiring moisture control and high filtration efficiency such as insulating, hydraulic, lube, and fuel oils.

The Hilsorb" Dryer features high-volume solid particulate and water removal capacity. The patented pleated construction permits higher flow rates at lower pressure drops than other dryer cartridges. The proprietary arrangement of the media layers provides a low pressure drop throughout the useful life of the cartridge, but as it nears saturation with water, the pressure drop increases to signal the need for a change.

The high-capacity Hilsorb" saves money by processing more gallons of oil with fewer changes. It maintains high dielectric strength and greater stability in transformer oils. Hydraulic equipment is protected from water damage while long life is assured through high filtration efficiency.

2. Benefits

- High water-holding capacity
- Efficient particulate removal
- Low initial pressure drop
- High flow rate
- Increasing pressure drop signals saturation

3. Applications

Insulating oils, hydraulic oils, lube, and fuel oils.

4. Part number details

| Cartridge | Data Sheet | ID (inches) | OD (inches) | Length (inches) | Quantity per Box | Shipping Weight (lbs.) |
|--------------|------------|-------------|-------------|-----------------|------------------|------------------------|
| PD718-12-CN | DD-700-35 | 2.56 | 6.25 | 18 | 4 | 18 |
| PD718-12-CRN | DD-700-79 | 2.093 | 6.25 | 18 | 4 | 18 |
| PD718-03-CN | DD-700-35 | 2.56 | 6.25 | 18 | 4 | 21 |
| PD718-03-CRN | DD-700-79 | 2.093 | 6.25 | 18 | 4 | 21 |
| PD511-12-C | DD-700-83 | 1.75 | 4.68 | 11 | 4 | 7 |
| PD511-03-C | DD-700-83 | 1.75 | 4.68 | 11 | 4 | 7 |
| PD310-12-C | DD-700-82 | 1.063 | 2.75 | 9.68 | 4 | 3 |
| PD310-03C | DD-700-82 | 1.063 | 2.75 | 9.68 | 4 | 3 |

HP Synthetic High Pressure Cartridges



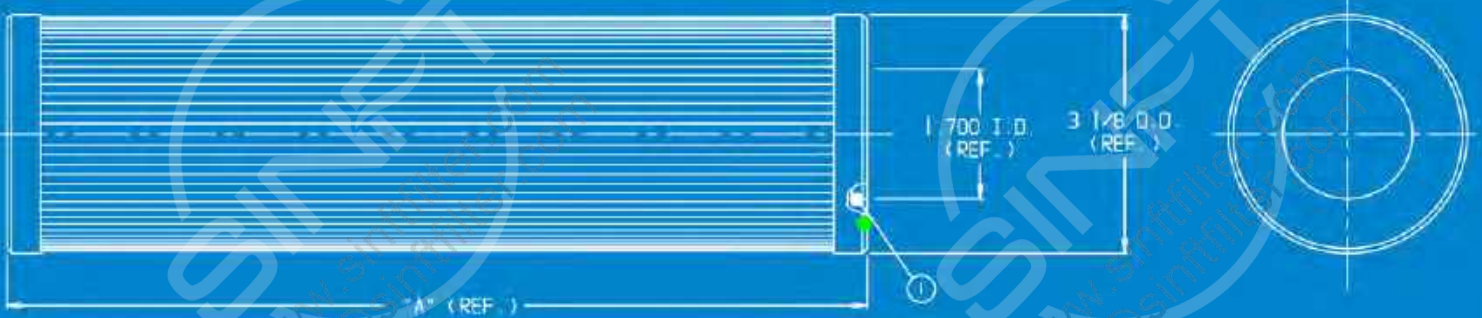
1. Introduction

High-pressure hydraulic cartridges are engineered for 2000 PSI pressure. The ability to withstand high pressure permits placement in the high-pressure circuit to protect sensitive hydraulic components. Contains micro-glass filter media between protective screens.

2. Applications

High-pressure hydraulic oil systems.

3. Drawing



4. Part number details

| MODEL NUMBER | NLOVO PIGNONE P/N | GENERAL ELECTRIC P/N | "A" | CARTRIDGE PACKAGE | ITEM | PART NUMBER | QTY | DESCRIPTION | AREA | DIRT HOLDING CAPACITY |
|--------------|-------------------|------------------------|--------|-------------------|------|-------------|-----|-------------|-----------|-----------------------|
| HP311-05-GE | | | 11.250 | 0849-00-011 | 1 | 0391-00-007 | 1 | O-RING | 5.0 SQ.FT | 25 GRAMS |
| HP311-12-GE | RFD 37046 | 342A2581P8; 258A4800P2 | 11.250 | 0849-00-007 | 1 | 0391-00-007 | 1 | O-RING | 4.0 SQ.FT | 25 GRAMS |
| HP321-12-GE | RFD 33258 | 258A4800P4 | 21.250 | 0849-00-008 | 1 | 0391-00-007 | 1 | O-RING | 7.5 SQ.FT | 48 GRAMS |

O-ring Sealed 718/736 Cartridges



1. Introduction

Features a new O-ring seal design! Replaces the PH718-CN series in new installations. Note: Is not interchangeable with the PH718-CN; requires a compatible vessel.

2. Features

- Microglass filter media is sandwiched between two protective layers of Nylon media, then supported with an inner and outer layer of epoxy-coated steel screen.
- Inner and outer support screens provide a rigid pleat structure to withstand high cyclic and pulse flow fatigue.
- Synthetic media enables the cartridge to be used in a wide range of applications, including those which could deteriorate a standard cellulose paper cartridge (e.g. water exposure).
- O-ring sealed ends means positive sealing for critical applications.

3. Applications

- Lube, seal, or hydraulic oils used in turbines, engines, and compressors
- Fuel oils
- Oils with water
- Water and water-based fluids
- Flushing

4. Specifications Construction Materials

- Media: Microglass filter media sandwiched between two protective layers of nylon media then supported with an inner and outer layer of epoxy steel screen.
- Center Tubes: Tin-plated steel
- End Caps: Coated steel
- O-ring Seals: Buna-N standard, others are available
- Collapse Pressure: 100 psid (6.9 bar)
- Maximum Service Temperature: 250° F

5. Part numbers details

| Cartridge | Sold in Quantities of | Single Cartridge Weight | Dimensions Nominal |
|-------------|-----------------------|-------------------------|--------------------|
| PH618-XX-CG | 4 | 7 lbs. | 6"OD x 18" |
| PH636-XX-CG | 2 | 14 lbs. | 6"OD x 36" |

Selexsorb GT Filter Cartridges



1. Introduction

1. Selexsorb GT is a patented adsorbent specifically designed for use with Fyrquel gas turbine lube and hydraulic control fluids. Another application is steam turbine EHC control industrial hydraulic systems. The unique composition of this adsorbent maintains the original, superior properties of these fluids for prolonged periods.

2. Benefit

- Longer fluid life - Fluid changeout intervals are greatly lengthened, and the fluid is maintained in near-original condition.
- Increased equipment life - A result of continual removal of acid phosphates and moisture.
- Standard sizings - Designs fit most standard Hilco filter housings (e.g., 718, 119).

Lifting handle - for convenience in handling.

Ambient - Perforated steel or expanded metal ambient provides added strength.

Lifting tab - for convenience in handling.

Polyester media retainer - under the ambient for superior chemical resistance and media retention.



Selexsorb, ST Cartridge Specifications

| Cartridge (Data Sheet) | Dimensions (inches nominal) | | | Housing Nominal Centerpost | Case Quantity | Shipping Weight Per Case | Gram-Moles Acid Capacity Per Cartridge |
|---------------------------|--------------------------------|--------|-------|----------------------------------|------------------|--------------------------------|--|
| | OD | Length | ID | | | | |
| ST310-00-C | 3 | 10 | 1 | 3/4 | 4 | 7 lbs. | 11 |
| ST511-00-C | 5 | 11 | 1 3/4 | 1 1/4 | 4 | 22 165. | 45 |
| ST718-00-CRN | 7 | 18 | 8 | 1 1/2 | 4 | 46 lbs. | 80 |
| ST718-00-CN | 7 | 18 | 2 1/2 | 2 | 4 | 46 lbs. | 80 |
| ST119-00-03ZXCO | 11 | 19 | 2 1/4 | 1 1/2 | 1 | 41 1b8. | 3.08 |

Gas Coalescer / Separator Cartridges



It was designed to remove moisture and particulate contamination from steam and gas turbine lube oils. Self-sufficient stand-alone models with reservoir capacity ranging from 2,000 gallons to 12,000+ gallons and portable models as well as custom designs are available.

Applications

Marine/Shipping - Mid Stream Gas - Mining - Natural Gas Pipeline Transmission - Oil & Gas - Power Generation - Pulp & Paper - Refinery - Steel Industry

Demister Element

Demister Cartridge utilizes an inside out flow in order to trap the oil from the air stream and return it to the oil reservoir for reuse. The resulting clear air can be safely released to the atmosphere with no environmental impact whatsoever.

The Oil Mist Eliminator provides many industries with an essential, reliable system to minimize the environmental impact of essential operations.

Applications

Marine/Shipping - Mid Stream Gas - Mining - Natural Gas Pipeline Transmission - Oil & Gas - Power Generation - Pulp & Paper - Refinery - Steel Industry -



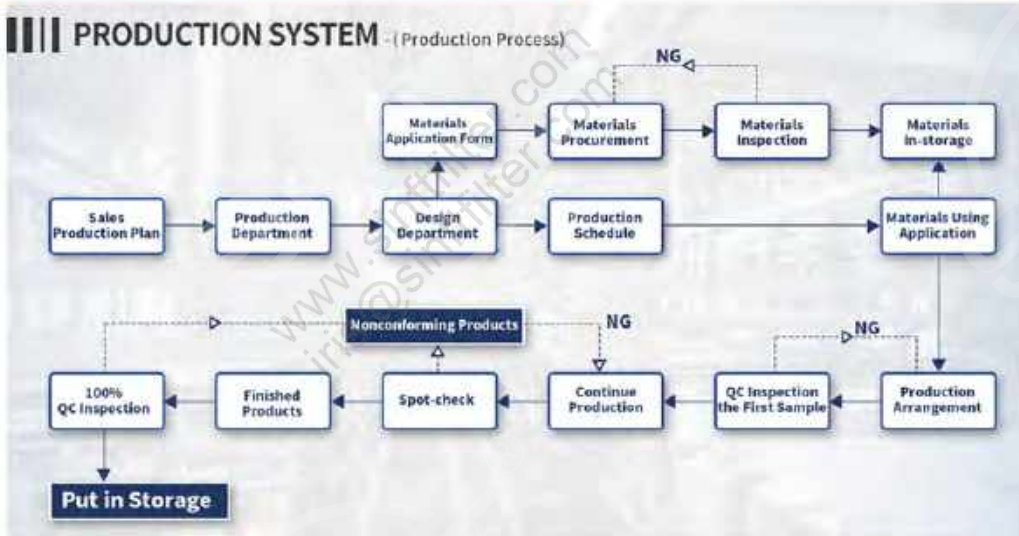
Replacement Filter Cartridge Production

SINFT has one hundred thousand level dust-free filter element production workshop.

There are 156 production equipments : 51 pieces welding equipments, 5 sets cutting equipment. 20 pieces deformation equipment.32 sets molding equipment.4 sets packing equipment and so on.

SINFT has strict production system as bellowed:

SINFT workshop show:



Production equipment:

